

☆ **Four effects of Air Curtain:**

How does an air curtain work?  
Figure 1: Doorway with no air curtain



Warm air from inside the building being replaced by the cold outside air.  
Figure 2: Doorway with ambient air curtain



Image demonstrates effectiveness of ambient air curtain retaining ambient air in room.

Figure 3: Doorway with heated air curtain



Effectiveness of air curtain retaining the warm air and heating the cold air.

☆ **The Benefits**

**Comfort:** Air curtains help promote the perfect environment whether warm, cool or ambient - creating a comfortable climate for customers and employees.

**Open Door Policy:** Air curtains promote open door trading in retail outlets by providing uninterrupted access for passing trade.

**Energy-Saving:** Air curtains over open doors promote significant energy savings compared to those without air curtains.

**Protection:** Air curtains ensure a clean environment - protecting from dust, fumes, insects and general outdoor pollution.

**Health and Safety:** In refrigeration applications air curtains will significantly reduce the ingress of warm moist air when doors are required to be left open for loading and unloading which helps to retain the refrigerated air inside and the higher temperature air outside.

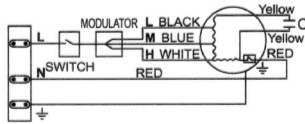
**Ease of Installation:** Air curtains are not only easy to install but also easy to maintain throughout their serviceable life. A simple and cost-effective solution for a comfortable environment.



☆ **Technical Parameter**

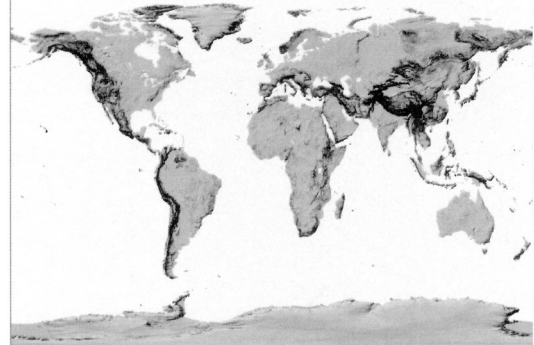
| Model      |                    | QAC-36-2 | QAC-48-2  | QAC-60-2  |
|------------|--------------------|----------|-----------|-----------|
| Length     | (mm)               | 900      | 1200      | 1500      |
| Voltage    | (V)                | 220-240  | 220-240   | 220-240   |
| Frecuency  | (HZ)               | 50/60    | 50/60     | 50/60     |
| Capacity   | (W)                | 180      | 200       | 220       |
| Air flow   | (M <sup>3</sup> H) | 960-1120 | 1200-1750 | 1500-2180 |
| Wind speed | (H)<br>(M/s)       | 12       | 12        | 12        |
| Wind speed | (M)<br>(M/s)       | 10       | 10        | 10        |
| Wind speed | (L)<br>(M/s)       | 8        | 8         | 8         |
| Noise      | Db(A)              | 55-57    | 56-58     | 57-59     |

☆ **Wiring Diagram**



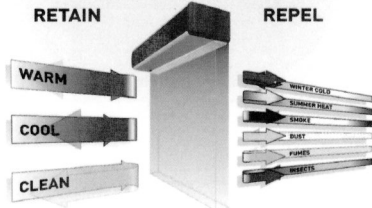
**AIR CURTAIN**

**Instructions**



☆ **Specialties:**

Unique air curtain can provide an effective, strong and powerful air door. Simplified installation; either wall-hang, or suspend from the ceiling of a room. Air flow vanes easily adjust airflow direction. Air curtain can be installed in any place as its attractive modern design



☆ **Superior Performance:**

The newly designed air curtain achieves high air velocity, Low noise and low power consumption. The intensely sharp airflow make it possible that air curtain maximizes its effect and functions

• **High Wind Speed**

The high pressure produced by the air curtain delivers a powerful jet of air from the air outlet. Optimum performance is attained when the air inlet on the top surface is kept at least 50mm from the ceiling.

• **Low Noise**

On the latest aerodynamic technology research and digital simulation system, our air curtain achieves greater wind, lower noise design, noise achieves qualitative upgrading noise, and average of 10dB lower compared with conventional models.

☆ **Block-off effectiveness**

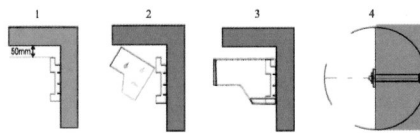
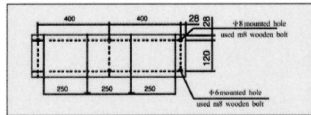
An air curtain's block off ability is decided by the air speed at the center of its airflow. Powerful air flow enables them to maintain a high level of air speed, resulting in superior block off ability.

**Note:**

- 1) Wind from outside, airflow from air conditioners, ventilator etc., may greatly lower the shielding effectiveness.
- 2) The effect against insects depends largely on the kind of insect, surrounding environment, air speed of the air curtain and etc. if more effective insect prevention required, please at the same time with other method.

**Installation method:**

Take off the installing plate from the machine, fix it on the top of the gate, then put on the machine, fix with bolt and keep the same as original. Use expansible bolt on concrete, use ligeneous bolt on timberwork, use bolt, cushion, spring cushion and screw cap on steel structure.



- 1) Installing back wall mounted plate.
- 2) Installing the machine
- 3) Fixing up with screw and disposing the wire
- 4) Make the rivet in correct state
- 5) The plug should be accessible after installation
- 6) The installation height should be a height of over 2.3m
- 7) 1.5 meters power supply cord is kept from the unit

**Mounting on Concrete**

Fix the mounting plate tightly with washers, spring washers and nuts.

**Mounting on steel hanger**

When using customer-provided hangers use six M6 bolts, washers, spring washers and nuts to fix the unit tightly.

**Mounting on wooden Frame**

When mounting to a wooden frame, you may need to use a reinforcing material to ensure a secure installation

**Method of use**

Connect power supply first, press the "ON/OFF" key to start work , then can choose the wind speed by remote controller. We have three wind speed could be choose. H: high air speed M: middle air speed L: low air speed. If you want to turn off the air curtain, press the "ON/OFF" key to stop work.



**Notice**

- 1) Please be careful when you move the machine. Don't make aerofoil distortion, the distortion of aerofoil will lead shake, noise.
- 2) Make sure that the switch and plugs are well connected.
- 3) Must allow the standards of electronically technology, make sure grounding.
- 4) Wire system should use wire protect equipment to avoid destroy of electrical motor.
- 5) Make sure the power supply capacity above 5A when install the air curtain
- 6) Clean the air inlet filter and wheel periodically after cut off the power.
- 7) Electric motor adopt airproof axletree, does not need oil, can be used for a long time.
- 8) If the power cord is damaged, it must be replaced by the manufacturer, its service agent or similarly qualified person in order to avoid a hazard.
- 9) The appliance is not intended for use by person (including children) with reduced physical, sensory or mental capabilities, or lack of experience and knowledge, unless they have been given supervision or instruction concerning use of the appliance by a person responsible for their safety.
- 10) Children should be supervised to ensure that they do not play with the appliance.

**Maintain:**

- 1) Clean the filter net and wind-wheel termly. Please ensure that the fan is switched off from the power supply mains when cleaning
- 2) Electric motor adopts airproof axletree, does not need oil, can be used for a long time.

**Environment**

Meaning of crossed-out wheeled dustbin: Do not dispose of electrical appliances as unsorted municipal waste, use separate collection facilities. Contact your local government for information regarding the collection systems available. If electrical appliances are disposed of in landfills or dumps, hazardous substances can leak into the groundwater and get into the food chain, damaging your health and well-being. When replacing old appliances with new ones, the retailer is legally obligated to take back your old appliance for disposals at least free of charge.

